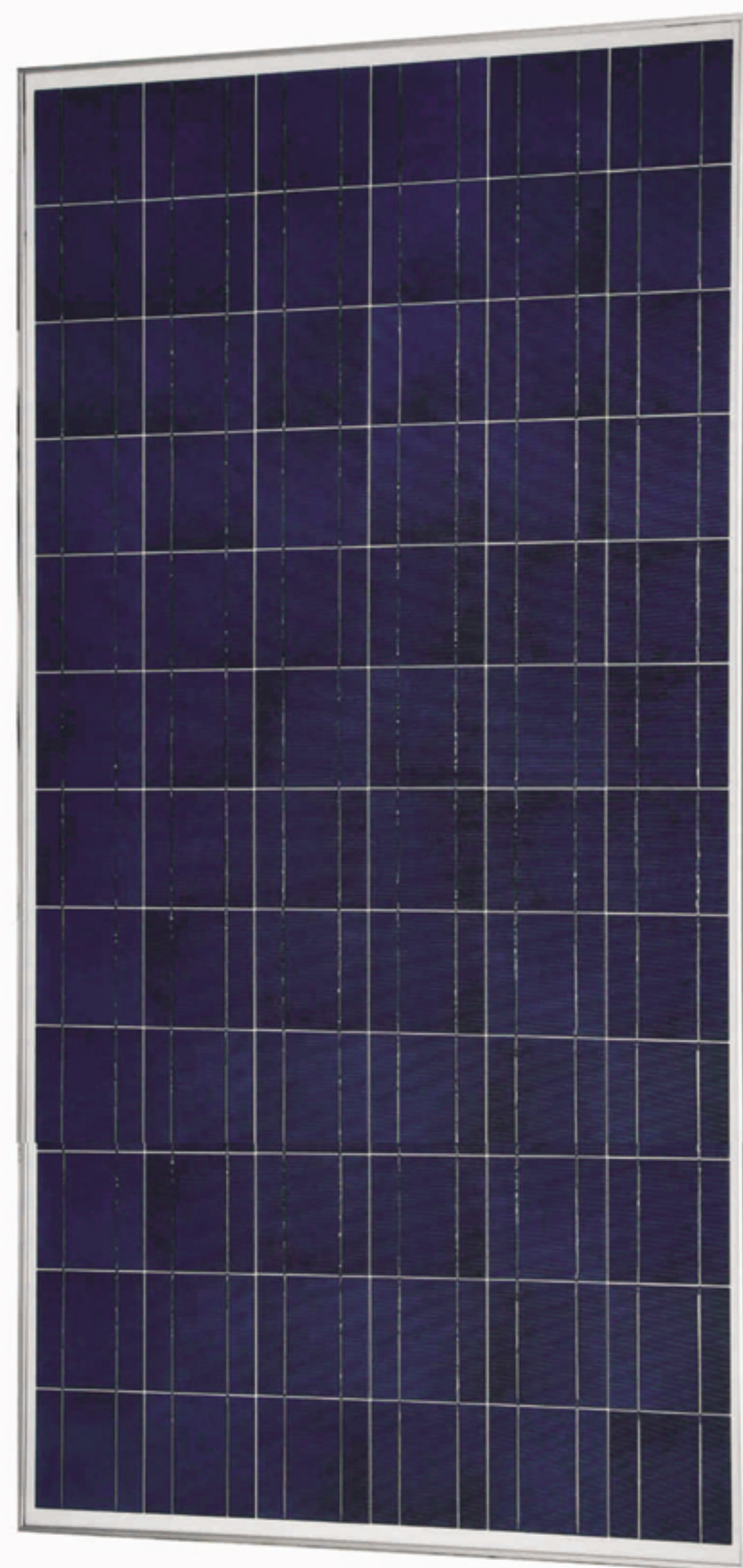


MS250P/260P/270P/280P-72



| Length | Width | Depth | Weight | Solar cells |
|--------|-------|-------|--------|--|
| 1957mm | 992mm | 50mm | 22.5Kg | 72 Pcs (156mm*156mm) in a 6*12 matrix connected |

- High efficiency module using 6" polycrystalline solar cells (156 X156mm).
- 72 solar cells and connection in series.
- 14% or Higher module conversion efficiency.
- High reliable schottky bypass diode minimizes power drop by shade.
- Using optical low iron tempered anti reflective glass, EVA laminate and weatherproof back-sheet provide protection in the severe conditions of environment.
- Robust, Clear anodize aluminum frame protected.



SUPERIORITY

Designed for optimum use in residential and Commercial grid-tied applications.

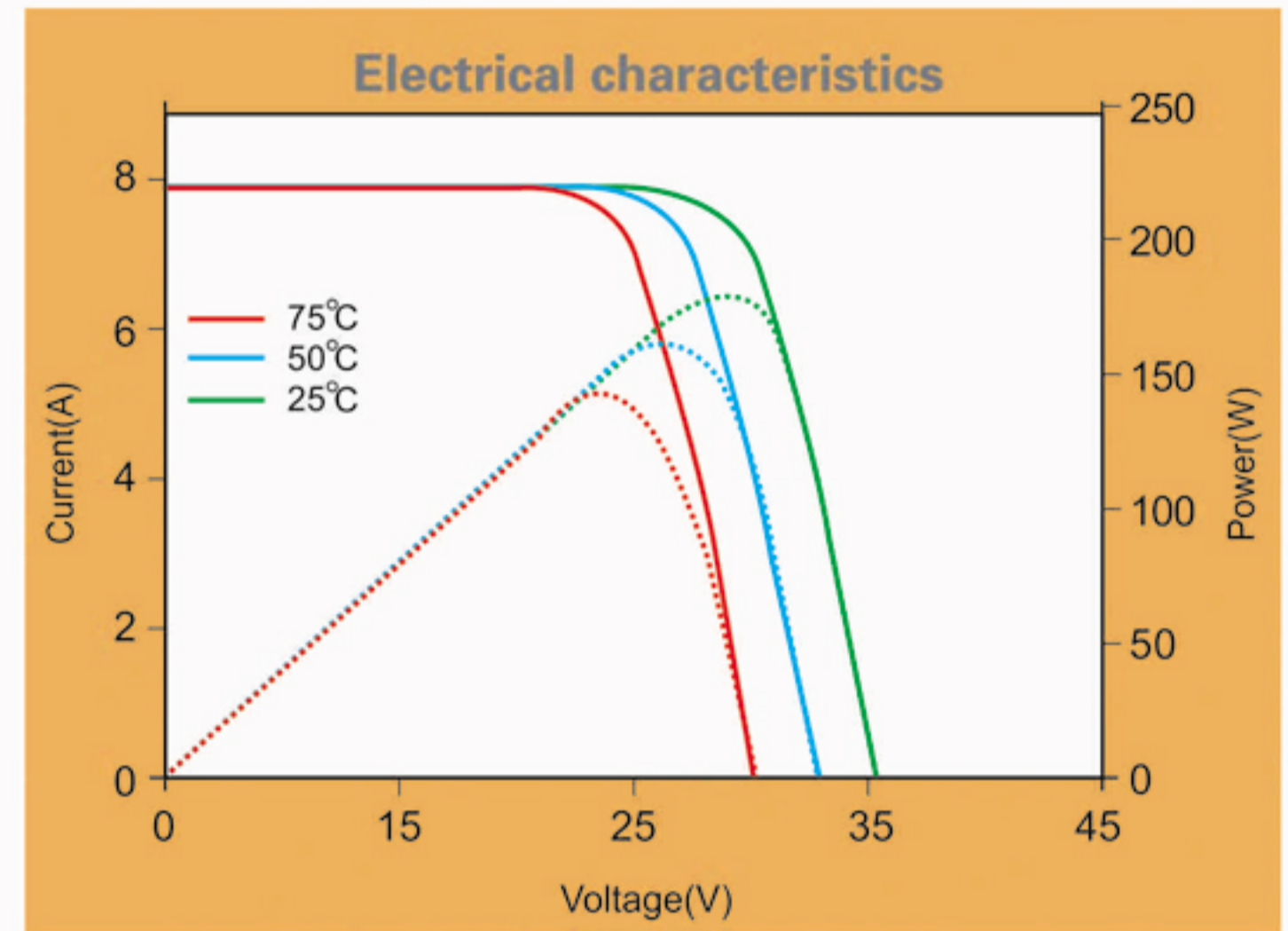
Bad weather withstand Junction BOX, crosslink cable and low connection losses connectors.

QUALITY ASSURANCE

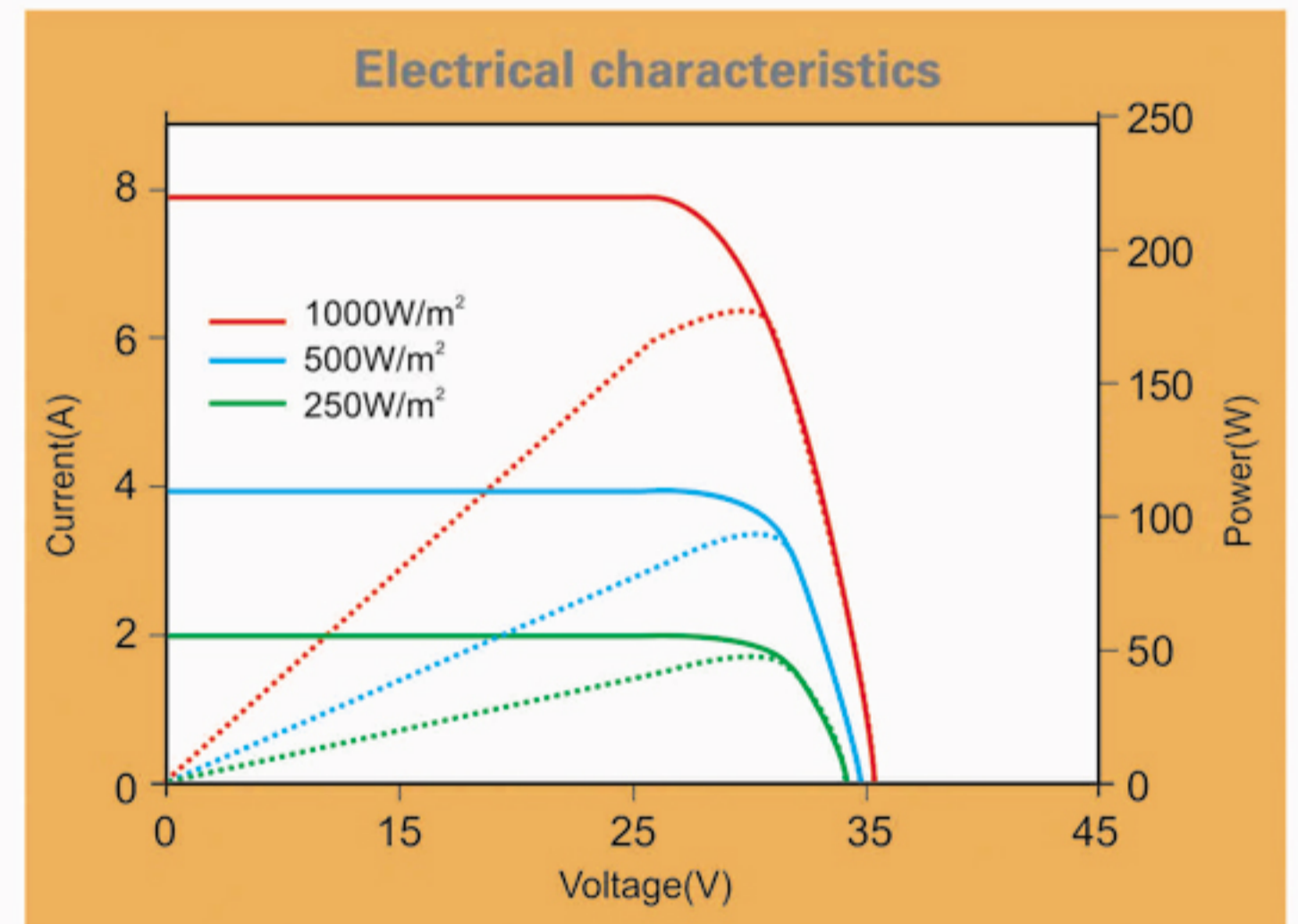
Utilizing advanced technology and automatic produdtion.

Complete test : Hot-spot endurance, Insulation, Outdoor exposure, UVpreconditioning, Humidity-freeze, Damp heat, Thermal cycling, Robustnessof terminations, Wet leakage current, Loading, Hail impact. Manufactured in ISO 9001 : 2008 certified facility.

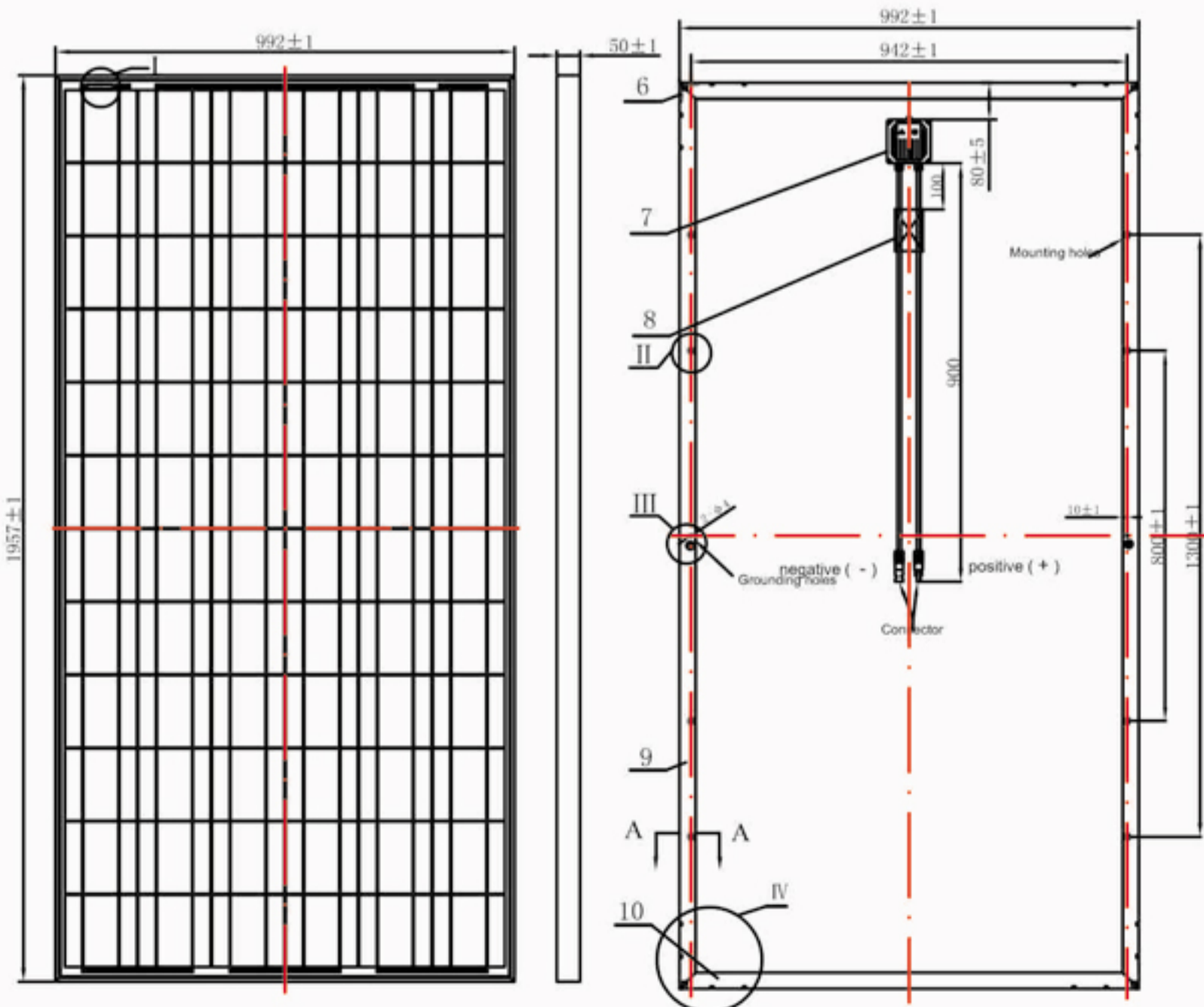
| Electrical Data | | | | | |
|-----------------------|------|--------|--------|--------|--------|
| Power Rating | Pmpp | 250W | 260W | 270W | 280W |
| Maximum Current | Impp | 7.01A | 7.20A | 7.48A | 7.57A |
| Maximum Voltage | Vmpp | 36.00V | 36.00V | 36.79V | 35.94V |
| Short-circuit Current | Isc | 7.63A | 7.80A | 8.07A | 8.14A |
| Open-circuit Voltage | Voc | 43.20V | 43.27V | 43.49V | 43.56V |
| Efficiency Rating | | 12.96% | 13.49% | 14.03% | 14.53% |
| Power Tolerance | | 3% | | | |



| Tested Operating Conditions | |
|-----------------------------|------------------------|
| Temperature range | - 40°C to 85°C |
| Damp heat | 85%RH |
| Max back loading | 2400 Pa |
| Max front loading | 5400 Pa |
| Hail impact | 25mm Ice ball at 23m/s |



| Warranty | |
|---|--|
| 5-year guarantee for workmanship | |
| 12-year guarantee of max. 10% loss of power | |
| 25-year guarantee of max. 20% loss of power | |



At STC (Standard Test Conditions). 1000W/m, 25° C cell temperature, AM1.5 spectrum